

Apollo II Tunnel Light

Optical Specs

LED Light Source	3030(Standard)/5050(Premium)
LED Color Temperature	4000K (Options: 5000K and 3000K)
Color Rendering Index	Ra>70(Options: 80)
Light Distribution & LENS Kit	Type I or Type II or Type V

Electrical Specs

Input	100-220-240-365V 50/60Hz
Power Factor	>0.95
Surge Protection	6KV (options 10KV & 20KV)
LED Driver	Philips LED Driver(Inventronics/MOSO options)
Dimming	W/O; 1-10V / DALI / Programmable / NEMA socket / Photocell
Insulation	Class I

Other Specs

Operating Temperature & Humidity	-40℃~50℃/10~95RH
Storage Temperature	-20℃~45℃
IP Classification	IP66
Housing	PC or Aluminum
Heatsink	Extruded Aluminum
L80 Hours @ 25℃	>93,000 hours
IK Rating	IK09 on Aluminum Housing or IK07 on PC housing

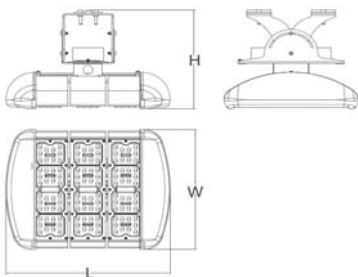


Project Photo

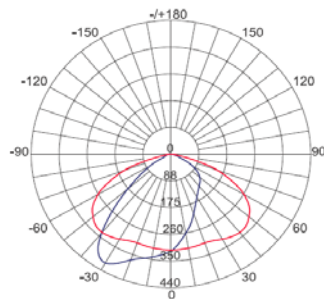


Model Number	Product	Nominal Power (W)	# of LEDs	Flux @ 5000K (lm)	Weight(KG)	Dimensions (mm)
TL2K1040	Apollo II Standard	35	40	3,850	3.80	L411 x W301 x H100
TL2K1080		75	80	8,250	4.30	L494 x W301 x H100
TL2K1120		115	120	12,650	5.80	L577 x W301 x H100
TL2K1160		150	160	16,500	6.40	L660 x W301 x H100
TL2K1200		190	200	20,900	7.60	L743 x W301 x H100
TL2K1240		230	240	25,300	8.40	L826 x W301 x H100
TL2K3001	Apollo II Premium	40	16	6,000	3.80	L411 x W301 x H100
TL2K3002		80	32	12,000	4.30	L494 x W301 x H100
TL2K3003		120	48	18,000	5.80	L577 x W301 x H100
TL2K3004		160	64	24,000	6.40	L660 x W301 x H100
TL2K3005		200	80	30,000	7.60	L743 x W301 x H100
TL2K3006		240	96	36,000	8.40	L826 x W301 x H100

Product Dimension



Photometric



Type II