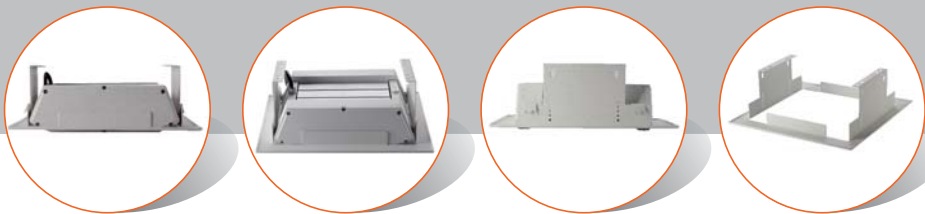


Artemis Series Canopy Light



IP 66 Working Temp: -40°C~55°C Working Humidity: ≤95%

Light Sources & Optics

Light Source
Color Temperature
Color Rendering Index
L80 Lifetime @ 85°C
Optic Lens

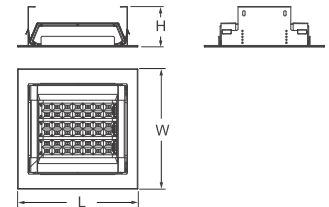
Lumileds / Cree
4,000K (Options: 3,000K and 5,000K)
Ra>70
55,000 hours
Polycarbonate

Electronics

Input Voltage
Power Factor
Dimming

120-277Vac,50/60Hz; 220-240Vac,50/60Hz
>0.95
Non-dimming /1-10V

Dimensional Drawings



Ordering Information

Name	Model	Power (W)	Q'ty of Module	Flux (lm)	Dimension (mm)
Artemis Canopy	BY2G3002	70	2	9,800	L410×W410×H154
	BY2G3003	105	3	14,700	L410×W410×H154
	BY2G3004	140	4	19,600	L472×W410×H154
	BY2G3005	175	5	24,500	L534×W410×H154
	BY2G3006	210	6	29,400	L596×W410×H154
	BY2G3007	245	7	34,300	L658×W410×H154

Description

Artemis Canopy Lights, utilizing the Kingsun family widely adopted scalable 16-LEDs modular design with the latest LED technology, deliver the best light efficacy on 70-245W ranging luminaires.

Succeeded from the conventional frames design, this canopy light can be easily embed mounted on the ceiling of the service stations, save time and cost for avoiding modify the holes on the ceiling.

High lumen output greatly improves the security and brand image of the upgraded service stations. Beside, this canopy lights could be tailored with a timing and dimming control to help reduce the power consumption and electricity bills.

Light Distribution Curves

